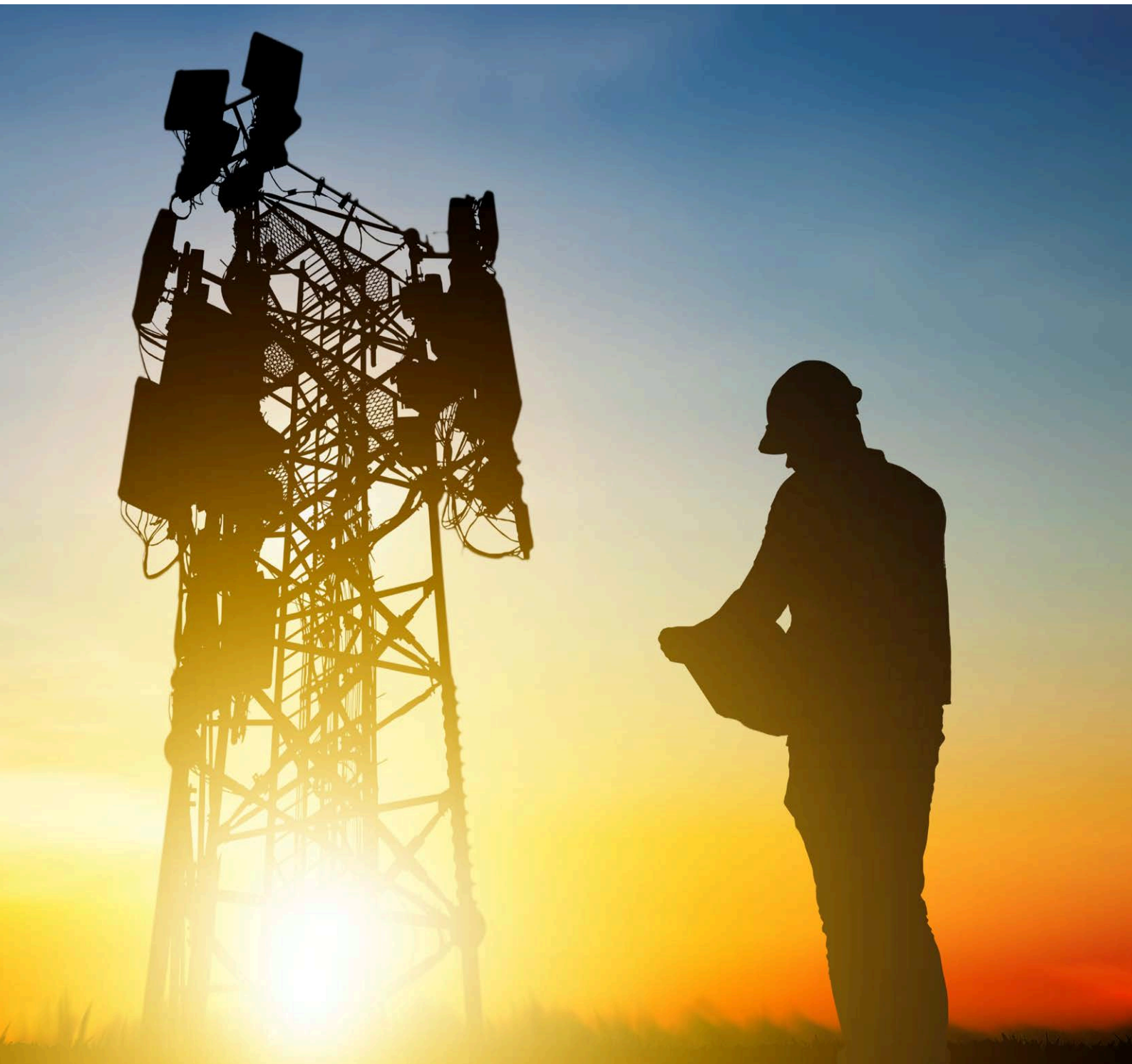


Powering the Future of Communication.



Contents

Our Vision & Mission	3
Welcome to CommTel	4
About CommTel	5
Powered by GenusPlus	6
Evolution and Timeline	7
Our Technology Portfolio	8
End to End Delivery	9
Our Specialised Capabilities	10
Integrated Systems & Services (ISS)	10
Critical Site Solutions (CSS)	11
Operational Support Systems (OSS)	12
Innovative Technology Solutions (ITS)	13
Why CommTel?	14
Why Our Customers Trust Us	15
Sector Expertise	16
Contact	19



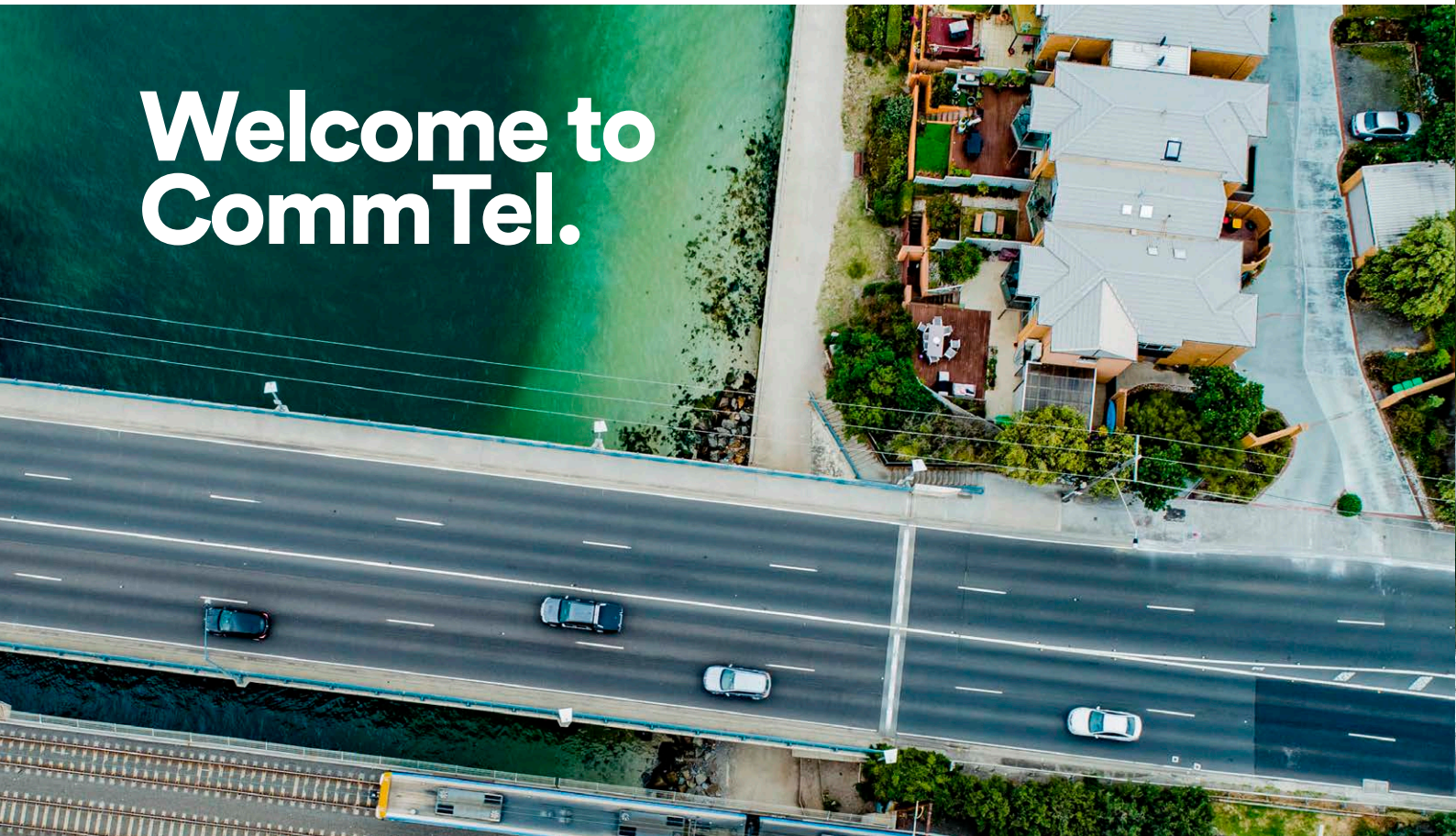
Our Vision.

To deliver digital transformation, meeting the current and future demands of mission and business critical networks.

The Commitment.

We ensure that critical network solutions... never fail, providing a bridge from legacy technology to advanced digital & IP environments.

Welcome to CommTel.



CommTel has been at the forefront of the **Mission-critical and Business critical communications landscape since 1998**. We began with a simple but vital goal, to ensure that the networks supporting our most essential industries — **Mining, Utilities, and Transport** — deliver reliable, essential services and never fail. Our capabilities, engineering expertise and ability to deliver has placed CommTel as a trusted international partner. Today, as the global industrial landscape undergoes a rapid digital and energy transition, that mission has never been more relevant.

The most significant chapter in our history began in 2024 with our integration into the **GenusPlus Group (ASX: GNP)**. This acquisition has fundamentally redefined what CommTel can deliver. By combining our deep-tier **systems integration** expertise with the scale and infrastructure power of Genus, we have expanded beyond being a technology provider to becoming a true **end-to-end Systems & Infrastructure partner**.

What does this mean for you?

It means **Strengthened Ability**. We are part of a group experiencing growth and expanded capability, with a market cap \$1.4 billion and a combined workforce of over 2,000 specialists, we now have the support to strongly address the Australia and International markets we serve. Whether we are deploying a **Critical Site Solution** in the Pilbara or architecting a next-generation **MPLS backbone** for utilities, we do so with the certainty of an **ASX-listed** parent company.

Despite our growth, our core values along with our experienced team remain unchanged. Safety and Mateship along with Innovation and Integrity are central to what we do. We are proud of our history and excited for the future. Our teams that design, engineer, integrate, deliver and **24x7 support** are available within region.

This ensures that when you face a critical incident, you are speaking to a local expert who understands your environment and your urgency.

As you review this Capability Overview, you will see the depth of our core business representing our **commitment** to your operational success.

We are not just building networks for today; we are engineering the resilient, automated, and secure foundations for the **future of industry**. We look forward to being your long-term partner on that journey.

Best regards,
Alistair Tibballs
Executive General Manager
CommTel Network Solutions
a Genus Company



connecting the future. together.

About CommTel.

Strategic Engineering for Critical Infrastructure

CommTel is a leading international technology integrator specializing in the design, supply, delivery and lifecycle management of mission-critical and business critical communications networks. We serve as a strategic partner and trusted advisor to the sectors that power and move our world—Utilities, Mining, Oil & Gas, Transport, Network carriers and Public Safety—where network resilience is directly linked to operational continuity and public safety.

In a landscape of accelerating digital transformation, CommTel provides the engineering rigour required to transition complex legacy environments into secure, high-capacity, and future-ready digital ecosystems.

End-to-end engineering excellence

Our value proposition is built on a comprehensive delivery model that removes the risk of fragmented vendor management. We offer a single point of accountability through:



Strategic Advisory & Architecture: High-level solution design tailored to long-term operational goals.



Professional Engineering Services: Deep technical expertise in migrating safety-critical systems with zero service interruption.



Complex Systems Integration: Seamlessly unifying disparate technologies into a cohesive, high-performance network.



Optimised Asset Management: Advanced monitoring and predictive analytics to maximise the ROI and reliability of critical infrastructure.

Certified to international standards for Quality, Health and Safety, and Information Security, CommTel is the partner of choice for organisations requiring sophisticated engineering solutions delivered at scale.

Driving operational outcomes

We measure our success by the strategic outcomes we deliver for our clients:



Resilience: Guaranteed performance in harsh, remote, and high-risk environments.



Intelligence: Turning raw operational data into actionable insights and proactive risk mitigation.



Security: Fortifying critical national infrastructure against evolving cyber and physical threats.



Sustainability: Designing efficient, future-proof networks that support long-term environmental and social responsibility.



Environment
ISO 14001
SAI GLOBAL



Quality
ISO 9001
SAI GLOBAL



OHS
ISO 45001
SAI GLOBAL



Information
Security
ISO 27001
SAI GLOBAL

Powered by Genus.

Strategic Edge and Scale Meets Specialisation

The acquisition of CommTel by the GenusPlus Group (ASX: GNP) marks a transformative era in our history. This partnership combines CommTel's deep technical expertise in systems integration with Genus's massive scale and end-to-end infrastructure capabilities. The integration of the specialist business units within the GenusPlus Group creates a formidable synergy that redefines infrastructure delivery. By combining the expertise of CommTel with GenusPlus, we offer a unified capability that spans the entire project lifecycle—from procurement and digital management to field engineering and remote infrastructure.

This synergy allows us to offer a “one-stop-shop” supporting **Tier 1 Miner** in remote operations or a **State Utility** modernising a national grid. Our combined strength provides the **balance sheet stability** and **technical depth** required to de-risk and deliver on your most ambitious digital transformation goals.

CommTel occupies a unique position in the market. The acquisition by GenusPlus has unified CommTel's high-end network engineering with the financial strength, national footprint, and multi-disciplinary workforce of a leading infrastructure services group.

This integration significantly strengthens our capability to execute **large-scale, Tier-1 infrastructure programs**. By combining our specialist communications intelligence with the Group's broader civil, electrical, and mechanical capabilities, we provide a holistic, “turnkey” solution for the most complex projects. This partnership ensures our clients benefit from the agility of a specialist firm backed by the governance, safety systems, and delivery scale of a national leader.



Evolution & Timeline.

A Legacy of Innovation

CommTel's journey is one of constant adaptation to the digital frontier.

1998

Inception:

Established as a small Australian-based business focused on mission-critical communications.



2000s

Early 2000s:

Rapid growth into a leading technology integrator, specializing in legacy PDH/SDH networks.



2010 Global Expansion

Through CommTel's engineering excellence and in-depth technical capability customers from around the globe were calling on CommTel's expertise. CommTel soon attracted interest & delivered projects in Iceland, Scotland, Finland, Saudi Arabia, Indonesia, NZ, Botswana.



Vendor Partner

As a systems integrator we value our vendor partnerships, CommTel has fostered positive relationships for decades with global partners such as Nokia, Belden, Avara, Aviat, Ceragon, Ciena, DAMM.



2014-23 Milestone projects

Delivery of large complex projects within timelines. SDH/PDH replacement projects 2018. Network Transformation from Legacy TDM to next Gen TDM+Packet. PDH to PDH with SDH and Ethernet Transport and then SDH to MPLS-IP/TP across Power and Transport sector.



The Shift

Past 10 Years:

Transitioned to IP-based systems, incorporating mobility, AI, and large-scale operational automation.



Further Growth and expansion

Opened regional office.



2024

October:

Acquired by Genus Plus Group (ASX:GNP).



2025

September:

New Executive team appointments.



Today...

A global leader with ~\$1 billion in infrastructure projects delivered, serving 120+ active customers across APAC and EMEA.



Our Technology Portfolio.

As a leading solution and systems integrator, we have an extensive portfolio to address our customers requirements. Our teams pride themselves on the technical knowledge and capability to design, test, deliver and support ensuring we are a trusted partner of choice.

Wireline (Optical and Copper)

- TDM
- WDM
- OTN
- Packet (L2/L3/MPLS-IP/TP/SR)
- SDN
- xDSL

Wireless

- Digital Microwave Radio (Pt-Pt, Pt-Mpt, Mesh)
- LMR / Tetra
- LTE/5G
- Mobility
- VHF/UHF
- SDN
- IoT/IIoT
- Coverage Extension for LTE/5G/P25/GRN/GPS

Security

- Firewall (Physical/Logical)
- Sensors/Probes

Services

- Design, Engineering, POC
- Project Management / Project Delivery
- Field services & installation
- Support L1-L4
- Helpdesk, technical support, on-call 24/7

Software

- NMS / EMS
- Security Management
- Infrastructure Management
- Asset Management

Infrastructure

- Equipment Shelters
- Hybrid Power Systems
- Solar Arrays
- Communications Towers
- Installation

End-to-End Delivery.

The Excellence Model



Trials & Feasibility

In-house lab testing and PoC



Design

Feasibility studies and high-level design (HLD) tailored to harsh environments.



Implementation

From factory acceptance testing (FAT) in our local Australian based facility to site installation and commissioning (SAT).



Maintenance and Support

24x7x365 network monitoring and maintenance ensuring zero-harm and uninterrupted reliability.



Integrated Systems & Services (ISS)



The Architects of Connectivity: Bridging the Gap from Legacy to Next-Generation.

In the high-stakes environments of Mining, Utilities, and Transport, a network is more than a utility—it is a critical asset. CommTel's **ISS unit** specializes in the design and delivery of multi-vendor, carrier-grade digital networks that are optimized for today but engineered for the demands of 2030 and beyond.

Our Engineering Philosophy: Vendor-Agnostic Excellence

Unlike traditional integrators bound to a single hardware provider, CommTel is **entirely solution-focused and vendor-agnostic**. We leverage our elite partnerships with global leaders to curate the “best-of-breed” technology for your specific topography and operational needs.

Core ISS Capabilities:

Integrated Physical & Cyber Security

End-to-end protection of assets, facilities and critical information through advanced physical security systems. CCTV, access control and intrusion detection prevent unauthorised access and secure sites. Firewalls, secure networks and threat management enable proactive defence and resilient operations.

Legacy Migration (The Smooth Transition)

We are experts in transitioning organizations from ageing PDH/SDH and copper-based systems to advanced IP-based technology without operational downtime.

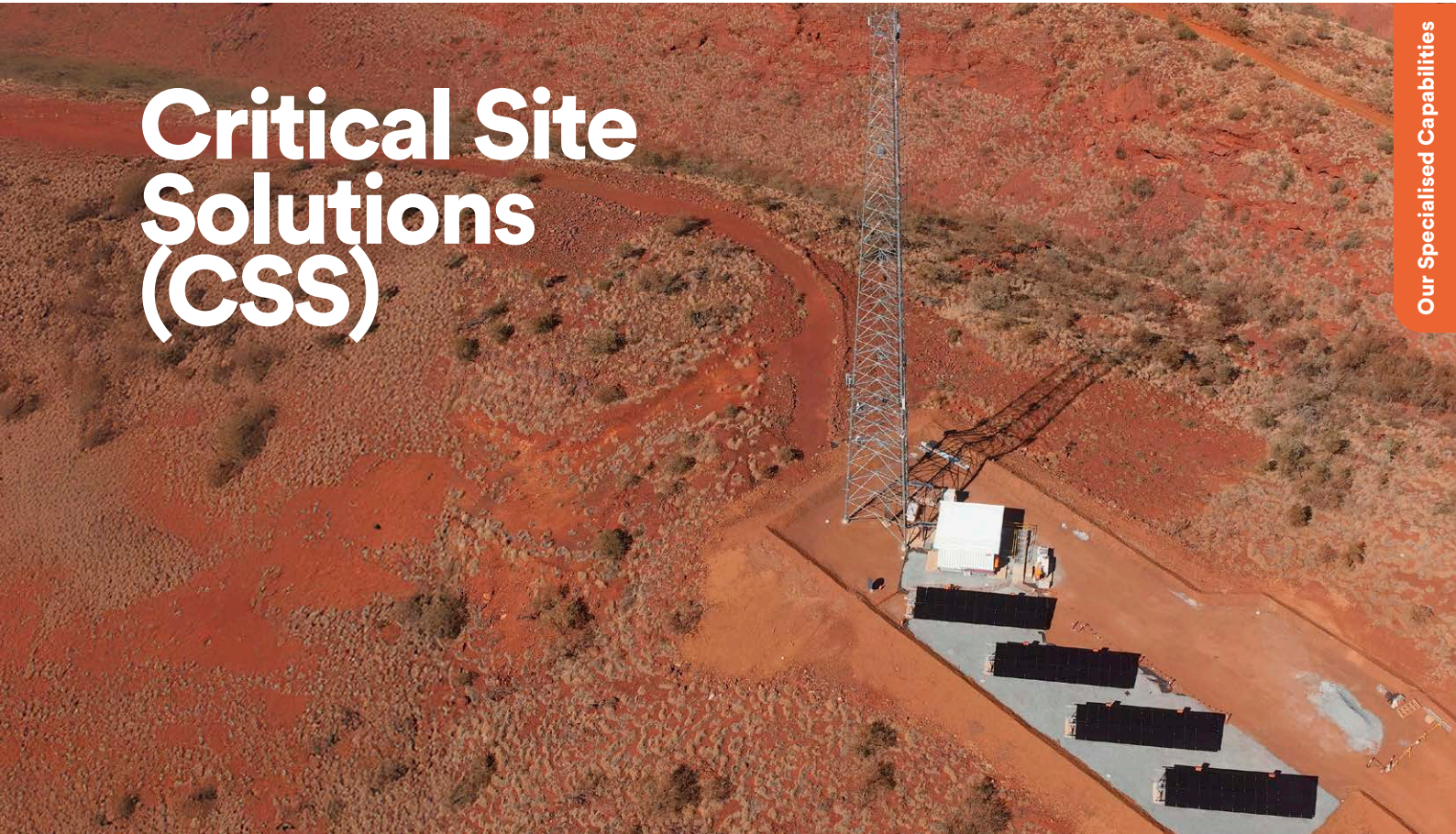
Project Management Capability

End-to-end delivery of complex communications projects across multi-vendor, multi-technology environments. Covers full lifecycle from design and integration through to commissioning and handover with strong governance and risk control. Ensures safe, high-quality outcomes delivered on time with seamless network integration.

System Integration & PoC

Before a single bolt is tightened on-site, your solution is rigorously tested in our State-of-the-Art Integration Facility. This “pre-staging” ensures that multi-vendor complexities are resolved in a controlled lab environment, not on your critical path.

Critical Site Solutions (CSS)



Engineered for Extreme Environments

Purpose built to perform in remote, high-risk and harsh conditions including fire zones, cyclonic regions and isolated terrain. Designed for durability and survivability, ensuring critical infrastructure remains protected and operational when it matters most.

Critical Deployment, Long-Term Reliability

Pre-integrated, modular design enables fast transport, installation and commissioning with minimal site impact. Built for long service life, low maintenance and reliable performance across remote network operations.

Key CSS Features:

Modular & Scalable Design

Flexible, containerised architecture tailored to site and application needs.
Supports communications, power systems and equipment fit-outs.
Easily scalable to meet growing network demands.

Extreme Environment Resilience

Built to perform in fire, cyclone, flood and remote conditions.
BAL-rated options up to BAL FZ for high fire protection.
Delivers durability, survivability and fast return to service.

Critical Deployment & Integration

Pre-integrated systems reduce onsite time, cost and risk.
Containerised design enables fast transport and installation.
Ideal for remote rollouts and disaster recovery.

Integrated Solar & Hybrid Power

High-efficiency solar arrays reduce diesel reliance and operating costs.
Seamlessly integrates with battery and generator systems.
Engineered for reliable performance in harsh, off-grid environments.

Low Impact, Low Maintenance Operation

Above-ground structures minimise environmental disturbance.
Optimised for extended run times with minimal servicing.
Remote monitoring supports efficient, low-touch maintenance.

Operational Support Systems (OSS)



The Intelligence Engine: Driving Visibility, Security, and Operational Control.

In an era of increasing network complexity and escalating cyber threats, having “eyes on the wire” is no longer optional—it is a mission-critical mandate. CommTel’s **OSS unit** provides the sophisticated software layer that transforms raw network data into actionable business intelligence.

Command and Control: The Multi-Vendor Advantage

Modern industrial networks often resemble a patchwork of different technologies and vendors. Our OSS solutions act as a “single pane of glass,” integrating disparate systems into a unified management interface. Whether you are monitoring an **MPLS backbone, LTE base stations, or legacy SDH nodes**, our OSS provides a consistent, high-definition view of your entire estate.

Core OSS Capabilities:

Unified Network Management (NMS)

Real-time monitoring of network health, performance metrics, and environmental alarms. We ensure you identify and resolve bottlenecks before they impact production.

Asset & Inventory Management

Maintain a digital twin of your physical infrastructure. From serial numbers to software versioning, our OSS tracks every component across its entire lifecycle.

Fault & Performance Analytics

Move from reactive to predictive maintenance. By analysing historical trends, our system flags potential failures, allowing for scheduled interventions that avoid costly emergency callouts.

Service Desk Integration

Our NMS feeds directly into our **24x7x365 Australian Service Desk**, ensuring our engineers have instant access to the telemetry needed to diagnose incidents in real-time.

Innovative Technology Solutions (ITS)

The Strategic Source: Delivering Vetted Technology with Precision.

The **ITS unit** is the bridge between global technological innovation and your local operational requirements. We do not just supply hardware; we curate high-performance ecosystems that are verified for the world's most demanding sectors.

A Premium Tier Partnership Network

CommTel is certified as a **Premium/Elite Partner** with major global vendors. This status grants us (and our customers) priority access to the latest hardware, specialized technical support, and competitive procurement pathways that typical resellers cannot match.

Key ITS Offerings:

MPLS & Optical Networking

We design high-capacity backbones (DWDM/CWDM) that provide the deterministic performance required for mission-critical tele protection and signalling.

Transmission & Radio

From Microwave and PMP Radio to TETRA and P25 emergency systems.

Wireless Mobility (LTE/5G, TETRA & P25)

Delivering ubiquitous coverage for autonomous haulage, remote telemetry, and emergency services communication in the most isolated regions.

The CommTel “Vetting” Process

Every product supplied by ITS undergoes rigorous **Performance Verification** in our integration facility. We prove the solution works in the lab so you can trust it works in the field.

Why CommTel?

CommTel provides mission-critical communication network solutions across several key industrial sectors.



Mining

We enable “Pit-to-Port” automation by deploying ultra-reliable wireless and fibre backbones that support driverless fleets and autonomous logistics chains, even in harsh environments with high vibration and dust.



Oil & Gas

Our **Multi-System Solutions (MSS)** deliver secure, high-bandwidth communications for remote onshore and offshore assets, integrating critical systems like pipeline leak detection, CCTV, and marine safety.



Utilities

We drive the energy transition by upgrading power grids with MPLS-TP technology and AI-driven platforms like **CN-SHIELD**, making grids smarter, more responsive, and capable of managing renewable energy sources.



Rail & Transport

We facilitate the move to data-driven rail networks by integrating modern 5G and LTE technologies into existing infrastructure, ensuring safe and reliable operations for trains, air traffic control, and ports.

Why Our Customers Trust Us.



Mining

Automation and continuous service for giants like BHP, Rio Tinto, and FMG.

Oil & Gas

Critical safety and reliability for Chevron, Santos, and Woodside.

Utilities

Grid modernization and renewable integration for Western Power and Ausgrid.

Rail & Transport

Facilitate data-driven rail networks by integrating modern 5G and LTE technologies for QLD rail and Sydney Metro Western Sydney Airport (SW-WSA).



Quality & Safety – The CommTel Way



Environment
ISO 14001

SAI GLOBAL



Quality
ISO 9001

SAI GLOBAL



OHS
ISO 45001

SAI GLOBAL



Information
Security
ISO 27001

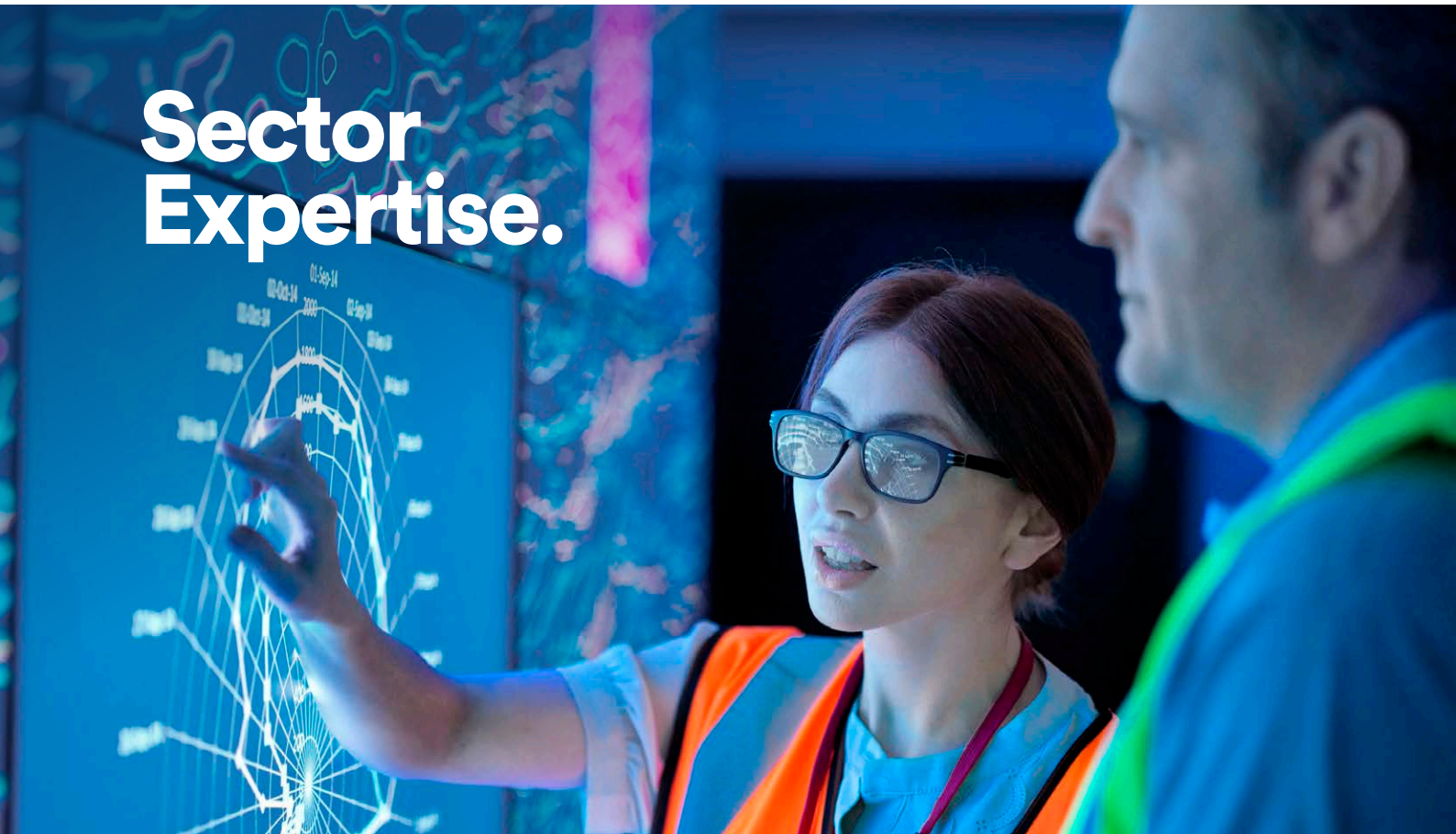
SAI GLOBAL

Training:

Our global training institution develops the skills of your workforce to operate and maintain your specific network.

Think Safe, Work Safe, Home Safe

Sector Expertise.



Mining: Powering the autonomous frontier

In the race toward “Mine of the Future” status, connectivity is the ultimate enabler. CommTel provides the high-bandwidth, low-latency backbone required for autonomous haulage, remote operations centres (ROC), and real-time geological data.

- **The CommTel Advantage:** Our **CSS (Critical Site Solution)** deploys towers and solar-powered hubs in days to keep pace with shifting pit boundaries.
- **Mission-Critical Reliability:** We integrate **Private LTE/5G** with industrial-grade **MPLS** to ensure that if the network stops, the mine does not.
- **Key Partners:** Trusted by **BHP, Rio Tinto, FMG, and Roy Hill.**

Oil & Gas: Safety through connectivity

For offshore platforms and remote LNG facilities, communication is a primary safety system. We design explosion-proof, ruggedized networks that operate in the most corrosive and hazardous environments on earth.

- **The CommTel Advantage:** Our **OSS (Operational Support Systems)** provide real-time monitoring of critical safety links, identifying potential failures before they impact environmental or human safety.
- **End-to-End Integrity:** From subsea fibre integration to satellite backhaul, we ensure “zero-harm” through redundant, high-availability architecture.
- **Key Partners:** Trusted by **Chevron, Santos, Woodside, and Qatar Petroleum.**

A Proven Track Record.



Statistics

\$1 billion dollars in infrastructure projects delivered.



Footprint

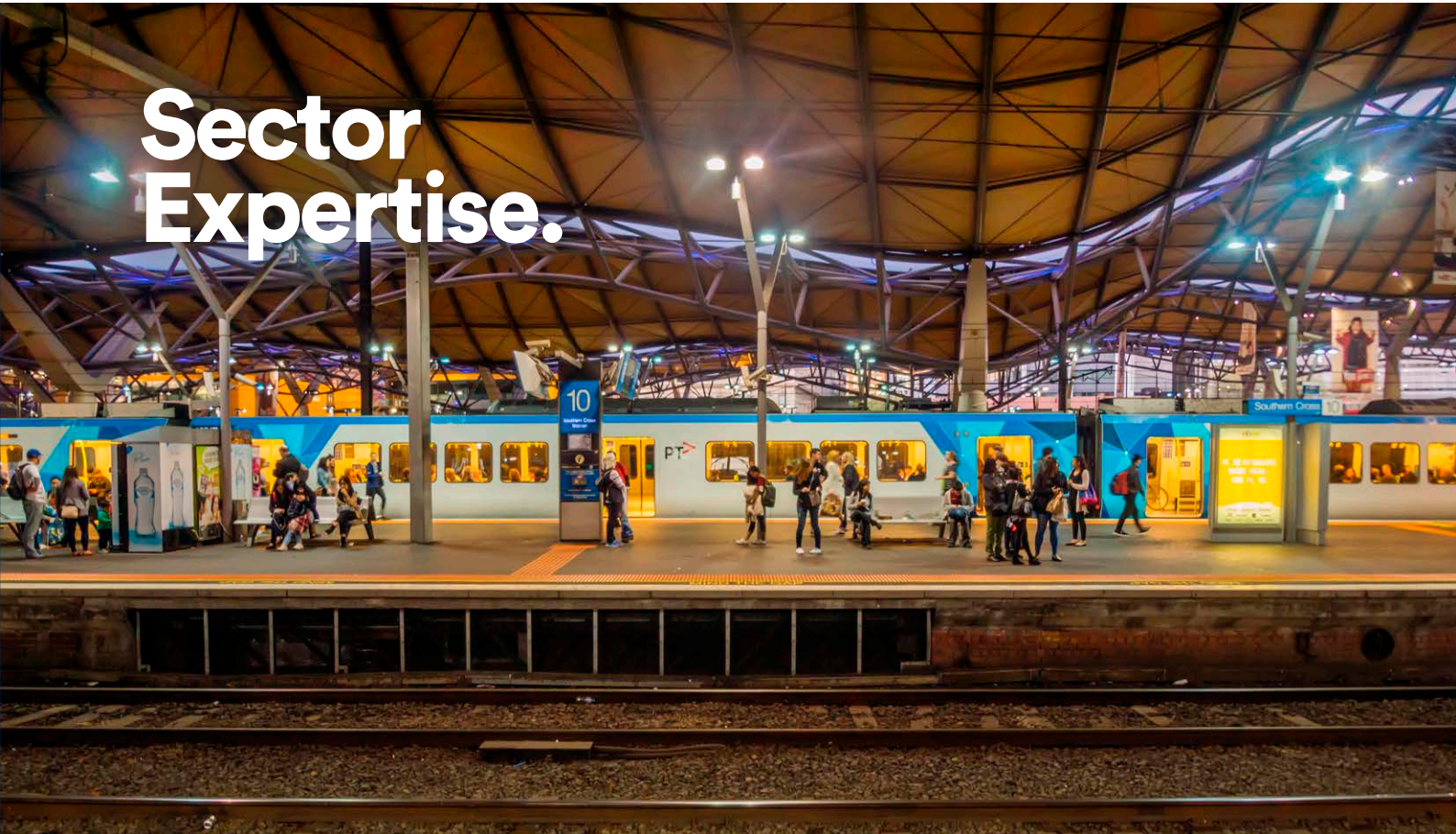
Delivered projects spanning across 35 countries



Map

Offices and reach Australia, New Zealand, UK, Europe

Sector Expertise.



Utilities & Power: Driving the energy transition

As the grid decentralizes, utilities require smarter, bi-directional communication networks. CommTel is at the forefront of the “Smart Grid” evolution, helping providers manage the influx of renewable energy.

- **The CommTel Advantage:** Leveraging **GenusPlus’s** deep heritage in power infrastructure, we provide a unified “Power & Comms” solution. Our **ISS (Integrated Solutions)** unit specializes in Teleprotection and Grid Automation.
- **Future-Proofing:** We transition legacy copper networks to **Optical DWDM**, providing the massive throughput needed for modern grid analytics and AI-driven load balancing.
- **Key Partners:** Trusted by **Western Power, AUSNET, Powerlink, Transpower NZ and Electranet, SPEN.**

Rail & Transport: The backbone of modern mobility

In an era of high-speed transit and automated freight, communication is the literal engine of safety and efficiency. CommTel delivers the robust, fail-safe networks required for Positive Train Control (PTC), signalling modernization, and real-time passenger information systems across vast and often harsh geographies.

- **The CommTel Advantage:** Leveraging our **ISS (Integrated System Services)** and **CSS (Critical Site Solutions)**, we provide specialized trackside infrastructure and wireless backhaul that withstands the vibration, electromagnetic interference, and environmental extremes unique to rail corridors.
- **Mission-Critical Integration:** We converge legacy signalling protocols with modern **MPLS and Private LTE/5G** frameworks, ensuring seamless connectivity between moving rolling stock and centralized control centres. This “always-on” architecture is vital for the transition to fully autonomous rail operations.
- **Safety & Compliance:** Our systems are designed to meet the highest SIL (Safety Integrity Level) standards, ensuring that data integrity translates directly to passenger and operator safety.
- **Key Partners:** Trusted by **ARTC, PTA, QR, Sydney Trains, and Aurizon.**

Let Us Build the Future. Together.

commtel
a Genus company

Contact Our Offices.



ANZ

Melbourne (Victoria - HQ)

29 Translink Drive, Keilor Park

Brisbane (Queensland)

310 Edward Street, Brisbane City

Sydney (New South Wales)

Level 9, 123 Epping Road, North Ryde

Adelaide (South Australia)

121 King William Street Adelaide

Perth (Western Australia)

63 Abernethy Road, Belmont



Australia

1800 266 683

New Zealand (Auckland)

Level 2, 142 Broadway, Newmarket



New Zealand

0800 623 386

UK/Europe

UK/Scotland

Suite E, Campsie Softnet Centre
3 Southbank Business Park
Kirkintilloch G66 1XQ United Kingdom



United Kingdom

0800 208 1178

Contact us at:

info@commtelns.com

Visit us at:

www.commtelns.com

Your Long-Term, Secure Partner.



commtel[®]
a Genus company

info@commtelns.com
commtelns.com



© CommTel Network Solutions. All rights reserved

commtel® and the CommTel® logo are registered trademarks of CommTel Network Solutions. The contents of this document are subject to change without notice. **April 2026**